



2020 ANNUAL REPORT

How a Community Foundation Works

A Community Foundation collaborates with their community and its residents to help achieve their philanthropic goals. No matter the size of donation, it offers donors a powerful and diverse opportunity to drive positive change, and contribute in a variety of ways to benefit a wide range of non-profit organizations doing work in social service, youth, arts, education, environment and more. Gifts from donors can be made in a variety of ways, including:

- Making an outright gift of cash, securities, or real property
- Setting up an automatic payment schedule
- Providing for a bequest in your will
- Taking out a gift of life insurance or
- Setting up payroll deductions through your employer

For more information, or to easily donate online, please visit www.mrcf.ca/giving.

📍 **Maple Ridge Community Foundation**
PO Box 370
Maple Ridge, B.C. V2X 8K9

☎ Telephone: 604.466.3312

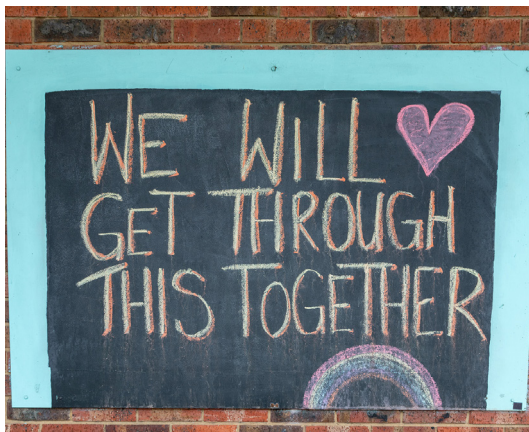
✉ Email: execassist@mrcf.ca

📘 FB: facebook.com/mapleridgecommunityfoundation

📷 Instagram/Twitter: @wearemapleridge

Registered charity# 119244051RR0001

**Big or small, every donation
makes a difference.**



Standing Strong Together Through a Pandemic



In 2019, our world became a little bit different with the sudden and unexpected arrival of COVID-19 and the declaration of a global pandemic on March 11, 2020. Despite this monumental change shifting how our community typically engages, collaborates, and supports one another, it quickly became clear that Maple Ridge would prove its strength and resilience and come together in very meaningful ways.

Volunteers and non-profit organizations continued to support our much-needed social services including Meals on Wheels, senior's outreach, family health care, hospice and food programs for kids, in spite of the need to adapt with health, safety and social distancing in mind.

Residents volunteered their time and talent to create face masks to help their friends and family stay safe, and donated the profits to worthy causes. They continued to support local by using online shopping, take out and curbside pick up for their orders to keep our small shops and restaurants open during a difficult time. Strangers donated gifts of food to hospitals and health care professionals to keep them fueled during long, tiring shifts as they worked to keep our community healthy.

Maple Ridge as a whole, bound together by our common goal and love for our neighbors, stood on doorsteps, balconies and streets every evening to cheer for our first responders that were caring for all of us.

And last but not least, our residents continued their philanthropic support by contributing to the Foundation through small online fundraisers, as well as celebrating with us during our first online fundraising events. Although our typical annual fundraising events were not able to continue live and in-person – our community was eager to contribute by attending, donating to and participating in our new virtual events.

The Maple Ridge Community Foundation is proud to work in and serve, such a vibrant, collaborative, compassionate community. And our 2019 / 2020 fiscal year is proof that when we come together as a community during a difficult time, we can do amazing things.

#WeAreMapleRidge

Treasurer's Report

What can be said about the past year that hasn't already been said? 2020, quite simply, offered up one of the most challenging years on record for the Maple Ridge Community Foundation. And, despite the mountain of adversity and challenges we've faced this past year, the resiliency of our extraordinary community and their support shone brightly all year!

With the enduring support of our amazing donors, throughout fiscal 2020 we successfully raised donations totaling \$105,779! This is an astonishing achievement which, directly contributed to our endowment growing to over \$1.3 million. Additionally, we successfully fundraised over \$76,700 through events such as our Annual Citizen of the Year Dinner, Night In Gala and Trivia Nights. Along with our annual granting (November annually), we participated in

two flow-through granting programs of the Emergency Community Support Funds (ECSF) with the Federal Government and Community Foundations of Canada and Small Grants from The Vancouver Foundation (VF) – allowing us to provide much needed financial support to a plethora of local non-profit organizations – ultimately resulting in grants totalling \$241,750 (ECSF & VF) & \$58,000 (MRCF Annual Granting) in 2020.

On behalf of the Maple Ridge Community Foundation, it is my esteemed privilege to extend our sincerest gratitude to each of our donors, sponsors, volunteers, staff, directors and our community, whose tireless efforts and contributions contributed to a year to be remembered for all the best reasons.

With Gratitude,
Phil Bourque

Financial Position – Snapshot

September 30, 2020

Current Assets	\$129,844	Current Liabilities	\$ 23,866
Investments	\$1,198,038	Unrestricted	\$70,466
Endowment	\$110,000	Restricted	\$1,343,550
=====		=====	
	\$1,437,882		\$1,437,882

Funds Under Administration

General Endowment

Anne and Richard Vogel Fund
Austin Pelton Memorial Fund
Brian Elliott Family Fund
Bruce Johnston Fund
Community Endowment Fund
Dave & Donna Telep Fund
Daykin Family Fund
Directors' Endowment
Dunning Family Fund
EPR Maple Ridge Langley
Findlay Gunnell Sandor
John & Douglas King Family Fund
Mark's Youth Fund
Marv Jones Family Fund
Patrick Smith Family Fund
Ralph and Bonnie Telep
Rick & Melissa Cable Family Fund
Ron and Alma Jones Family Fund
Shantz Family Fund
Stephen & Joanne Telep Fund
Tom Meier Fund

Designated Endowment

Alouette Home Start Society Youth Fund
Dr Robert & Michele Harrison Family Fund
Endowment for Physically Disabled
Environmental Endowment Fund
Robson Family Fund
Ron Merkley Memorial Library Fund
Van Vloten Cultural Fund

Agency

R.M. Youth Advocacy Fund
Ridge Meadows Hospice Society Fund
Ridge Meadows Seniors Fund

Donor Advised

Bryan & Kathy Hutton Family Fund
Community Chest
Founders' Cup Charity Classic
Mussallem Youth Fund
Rotary of Haney Endowment Fund
Rotary of Haney Youth

Scholarship

Mussallem Vocational Education Fund
Turell Brown Memorial Scholarship

Ensuring Happy and Healthy Kids in our Community



This year, through our Fall Granting Program, the Maple Ridge Community Foundation was able to support many worthy organizations providing food to youth through a variety of breakfast, lunch and weekend backpack programs.

Did you know that in our community, 20% of students struggle with food insecurities, with a total of 1,220 kids in our schools missing important meals every day? Food security for our kids is high priority for our residents,

and COVID-19 has impacted youth in a dramatic way, as families struggle with job loss and school-based programs being limited with school closures. We are proud to work with our donors to contribute to food security initiatives for kids in our community, because we know the need continues to rise. In 2020 we were pleased to contribute \$21,000 to support food programs managed by many local non-profits in our community.



Honouring a Lost Community Hero

In 2018, the Foundation named Teesha Sharma as the Under 40 Citizen of the Year for her tireless advocacy and mentorship for youth in our community. Unfortunately, the community lost an incredible community champion when she passed tragically in 2019. She is deeply missed, and we want to proudly continue her legacy by naming our Under 40 category as the "Teesha Sharma Memorial Under 40" award from this point onward.

Teesha worked as a youth services program director at the CEED Centre Society where she mentored homeless youth, created barrier-free programs for youth in need and spearheaded the creation of Blue Door Youth Services. She was recognized provincially, nationally and internationally for her advocacy in youth mental health and domestic human trafficking.

Even though each of her days was met with overcoming adversity of her own, she is remembered for her infectious laugh, incredible sense of humour and quick wit. May her light, her impact and her work continue to shine bright in Maple Ridge.



Photo credit: Colleen Flanagan/Maple Ridge-Pitt Meadows News

**Congratulations to our
2020 Citizen of the Year
Award Recipients!**

Lifetime
Achievement



Karen Wakita

Teesha
Sharma
Memorial
Under 40
Award



Jennifer Baillie

Youth



Emily Barker Voisine

Grants 2020

Since 2000, the Maple Ridge Community Foundation has granted over \$860,000 to local non-profits for our residents. In 2020, we are proud to have granted over \$58,000. Thank you to these local organizations doing wonderful work in our community!

Alouette River Management – \$2,500

Youth & Community Education

Community Services – \$2,000

Alisa's Wish Child & Youth Advocacy Centre

Community Services – \$2,000

Ridge Meadows Foundry

Community Services – \$2,000

Senior Community Meal Delivery

Community Services – \$2,000

Youth Restorative Justice – Donor directed by the George Mussallem Youth Fund

Friends in Need Foodbank – \$5,125

School Meal and Snack Program - Donor directed by the Alouette Home Start Society Fund

Hope for Freedom Society – \$1,500

Recovery Programs

Maple Ridge Arts Council – \$1,500 for ACT Lobby Nights

Maple Ridge, Pitt Meadows Katzie Seniors Network – \$2,500

Seniors' "Party Line"

Meadow Ridge Rotary Club – \$2,875

Starfish Backpack Program

North Fraser Therapeutic Riding Association – \$5,000

Youth Empowerment Program - Donor directed by the George Mussallem Youth Fund

PLEA Community Services – \$3,000

"Gen-Out" Program - Donor directed by the George Mussallem Youth Fund

Ridge Meadows Hospital Foundation – \$10,000

Donor directed by the Cable Family Fund

Salvation Army – \$1,000

Haney Rotary Lunch Bag Program

School District 42 – \$3,000

Connex Alternate School Healthy Body/Health Minds - Donor directed by the George Mussallem Youth Fund

School District 42 – \$5,000

Eric Langton Elementary Nutritional Supports – \$5,000 - Donor directed by the George Mussallem Youth Fund

School District 42 – \$1,000

Garibaldi Breakfast Club – \$1,000 - Donor directed by the George Mussallem Youth Fund

School District 42 – \$1,500

Glenwood Elementary Christmas Hampers

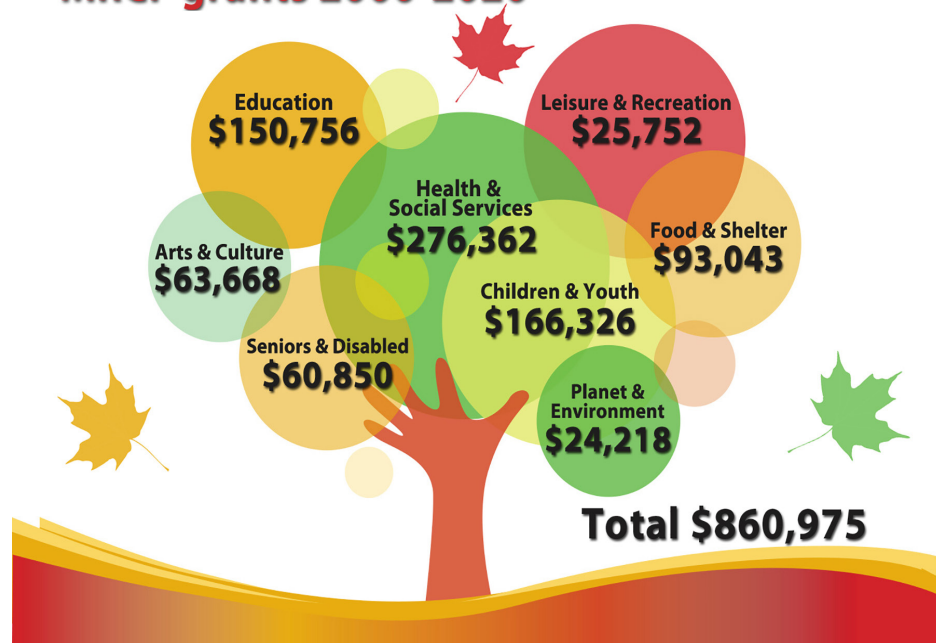
YFC Youth Unlimited – \$3,000

High School Breakfast Program - Donor directed by the George Mussallem Youth Fund

Youth and Philanthropy Initiative (YPI) Canada – \$1,500

Youth and Philanthropy Initiative

MRCF grants 2000-2020



Fundraising in a Different Way

Our successful live Pub Night in October 2019 was followed by a difficult year with little opportunity to meet in person, and gather and celebrate the important work we do at the Foundation. However, thanks to some creativity from our Board, Staff and Volunteers, and the generosity of our sponsors, donors and attendees we were able to host 2 amazing, successful virtual events. Using some great technological advances, the show - and the fundraising - went on!

In June we proudly hosted the "Night-In Gala", where we highlighted 23 talented entertainers including musicians, dancers, vocalists, acrobats and comedians. We were thrilled to showcase many local, talented youth for this all-ages, variety-show-style event. Guests were also treated to delicious meals from our "Community Kitchen" – a special collaboration from Big Feast Bistro and Humble Roots.

Then in October, delayed due to social restrictions, we hosted the virtual version of our annual "Citizen of the Year" fundraising event typically hosted in April, celebrating our 9 Citizen of the Year finalists in 3 categories. Featuring entertainment, dinner from Whisk Catering, "live" award presentations, silent and live auction and more, our attendees were thrilled to be able to continue this annual tradition, despite being physically apart.

In addition, we've had some fun with our community through our online trivia night fundraisers, which continue on a monthly basis. Our residents and their friends and families can interact "live" and compete for prizes, while helping us raise funds for our community.

Through these virtual events, along with our annual pub night pre-pandemic, the Maple Ridge Community Foundation raised over \$105,000. We are proud to continue working with our sponsors, donors and our community to find creative solutions, engage our residents and raise funds in a safe, healthy way – so we can continue building a better community, together!



Scholarships 2020

Congratulations to our 2017 MRCF scholarship recipients!

MRCF 20th Anniversary Scholarship - \$1,000 - Danica Berard

Dr. Robert C. Rhodes Scholarship - \$1,000 - Katerina Romanenko

George Mussallem Vocational Education Opportunity Fund - \$2,000

Iman Entezari, Kyra Fong, Brody Severinski, Reece Maderios and Adrianna McKenzie

Maple Ridge Community Foundation Board of Directors



Monica Hampu
President



Phil Bourque
Vice President



Ernie Daykin
Secretary



Kathi Haplin
Treasurer



Roger Cummings
Director



Angela Dundas
Director



Justin Fuller
Director



Kim Grimbeek
Director



Rick Howard
Director



Kevin Nosworthy
Director



Bonnie Telep
Director



Eryn Van Vloten
Director

President's Message

When we rung in the New Year of 2020, your Maple Ridge Community Foundation was looking forward with excitement and the promise of many exciting activities. Then March 2020 rolled in and the year changed in ways no one could image.

Without a doubt, 2020 was a year unlike any other, in the history of the organization and in our own lives. The Covid 19 Global Pandemic has had a profound and lasting impact on how we live our lives, how we interact with each other and how fragile and unpredictable these times are.

While the MRCF faced significant challenges that greatly impacted our organization, there was also successes. Maple Ridge as it always does, responded with strength and resilience. We witnessed an incredible dedication and commitment from our community and the generosity and kindness of individuals who found new approaches to contribute to our Foundation in creative and positive ways.

While our Annual Golf Tournament was postponed due to Covid 19. With a nimbleness and creativity and determination the MRCF board, staff team and

volunteers thought outside the box and pivoted our events! The results were the Foundation successfully continued their efforts to raise much needed funds through our first ever Online Night in Gala, Black and White Virtual COY Dinner and online Trivia nights.

Our Annual Grants Night went virtual also, allowing over \$58,000 to be granted to local non-profits.

I would like to say a very heartfelt THANK YOU to our Staff, Volunteers and Board of Directors for their ongoing dedication, hard work and willingness to adapt as we navigated these challenging times!

The need for grants in our community increases every year, so I encourage each one of you to get involved and support the Maple Ridge Community Foundation so we can continue our work and give back to this great community! Please consider how you can leave a legacy in our Community for generations to come.

With gratitude for supporting your Maple Ridge Community Foundation! #WEAREMAPLERIDGE

Monica Hampu

Working with Charitable Partners to Combat COVID-19 in our Community

Since the start of the pandemic, charities and non-profits have been leading the charge to assist those who need it most in the fight against COVID-19. The Maple Ridge Community Foundation is honoured to have participate in distribution of funds to alleviate the effects of COVID-19 for individuals, families and charitable organizations in our community.

We are proud to have invested over \$210,000 from the Government of Canada's Emergency Community Support Fund (ECSF) towards local charities and qualified donees supporting populations experiencing heightened vulnerability in Maple Ridge and surrounding areas.

In addition, we were able to grant an additional \$30,000 through our "Emergency Small Grants" program



directly to non-profit organizations to serve residents in need effected by COVID-19.

These funds distributed helped our community directly by supporting much-needed programs such as food security, housing, counselling, education, health and safety and more, during difficult times.

Thank You To Our Sponsors!

Once again, we wish to thank our many sponsors who have generously supported our fundraising initiatives and our programs.



Manulife Securities Kathy Blom

Seville Mortgage

Ralph & Bonnie Telep / Coldwell Banker

Fuller Watson Brand Source

West Coast Auto Group

Remax Lifestyles Realty

TD Canada Trust

Findlay Gunnell Sandor

Rob Jeeves

Chances Maple Ridge

MNP

Chris and Mieke Duyvestyn

Scott & Sonja Jones

Canadian Tire

Centra Lawyers

Westland Insurance

TriTel Realty

Ryan Heating & Air Conditioning

American Standard

Callison Financial