



2016 Annual Report

#WeAreMapleRidge

Helping to Heal Our Community's Hurt Children

For a child who is a victim to, or witness of, abuse the most difficult step is coming forward to tell someone they trust. Historically, this first step was followed by a long, impersonal and often traumatic process for both the victims and their supporters.

Jennifer Hyland, a Sergeant for the Ridge Meadows RCMP detachment dreamed of a better way to help these victims. In 2010 The Department of Justice, Canada announced funding for Child Advocacy Centres across Canada. Maple Ridge-Pitt Meadows Community Services collaborated with Sergeant Hyland and her team to work toward bringing a centre to our community. In 2012, after a feasibility study, Maple Ridge-Pitt Meadows Community Services received grants to fund a pilot centre in Maple Ridge. The pilot proved the need and success of such a centre, and today Alisa's Wish Child and Youth Advocacy Centre relies on community fundraised dollars to continue their work. Alisa was one child who Sergeant Hyland helped through the process; she is one of many.

Alisa's Wish is accessible to children and youth up to 18 years of age who have experienced or witnessed physical, emotional or sexual abuse. It is a compassionate first-entry point for the victims and their supporters. A Child and Youth Counsellor places calls to the necessary

organizations to begin the healing journey. Then the RCMP, social workers and other community services join them at the centre. It is a comfortable space with toys, refreshments, and above all, caring staff who helps ensure access to support.

Since their doors opened in 2013, Alisa's Wish Child and Youth Advocacy Centre has helped over 600 people; 71% were female victims, 60% under the age of 12, with an average age of 10. With resources like this in our community, the hope is that more victims feel comfortable taking their first step toward healing.

The Maple Ridge Community Foundation has granted \$7,250 to Alisa's Wish Child and Youth Advocacy Centre. Funding helped equip the new centre with supplies and now is supporting program costs. "It breaks our hearts when we hear about kids as young as 3 years old being victims of abuse," says Treena Innes, Development Director, Maple Ridge Pitt Meadows Community Services, "But we know there are donors like the Maple Ridge Community Foundation to count on to keep the Alisa's Wish doors open so kids and families have a safe, caring place to go. This motivates all of us to keep supporting this special place for our community."

To learn more about Alisa's Wish, visit www.alisaswish.com.

Think of us as
Maple Ridge's
permanent
savings account...



The Maple Ridge Community Foundation (MRCF) manages a permanent endowment in order to respond to emerging and changing community needs, today and in the future. This allows us to be able to provide a vehicle and service for donors with varied interests and at various levels of charitable giving.

The MRCF accumulate capital through gifts from individuals, families, and businesses. The annual investment income on this capital is granted to charitable organizations in Maple Ridge that address needs in education, health, recreation, the environment and the arts. Since its inception, Maple Ridge Community Foundation has contributed hundreds of thousands of dollars in grants back to local non-profit organizations.

Building a better community, together.

www.mrcf.com

Financial Position – Snapshot

September 30, 2016

Current Assets	\$74,176	Current Liabilities	\$ 1,552
Investments	\$814,129	Unrestricted	\$ 82,392
Endowment	\$110,000	Restricted	\$914,361
=====		=====	
	\$998,305		\$998,305

Funds Under Administration

General Endowment

Anne and Richard Vogel Fund
Austin Pelton Memorial Fund
Brian Elliott Family Fund
Bruce Johnston Fund
Community Endowment Fund
Dave and Donna Telep Fund
Directors' Endowment
Dunning Family Fund
John and Douglas King Family Fund
Marv Jones Family Fund
Patrick Smith Family Fund
Robert Harrison Family Fund
Shantz Family Fund
Stephen and Joanne Telep Fund
Tom Meier Fund

Agency

R.M. Youth Advocacy Fund
Ridge Meadows Hospice Society Fund
Ridge Meadows Seniors Fund

Donor Advised

Community Chest
Founders' Cup Charity Classic
Founders' Cup Special Fund
Mussalem Youth Fund
Rotary Club of Haney Youth

Scholarship

Mussallem Vocational Education Fund
Turell Brown Memorial Scholarship

Designated Endowment

Endowment for Physically Disabled
Robson Family Fund
Rotary Club of Haney Endowment Fund

Environmental Endowment Fund
Ron Merkley Memorial Library Fund
Van Vloten Cultural Fund

Subsequent to our fiscal year end, we have added the following funds:

Daykin Family Fund
Ralph and Bonnie Telep Family Fund
Mark's Fund
Ron and Alma Jones Family Fund
EPR of Maple Ridge, Langley Fund
Findlay Gunnell Sandor Fund
Norm and Betty Pelton Family Fund
Chris and Mieke Duyvestyn Family Fund

Treasurer's Report

The Maple Ridge Community Foundation had a fabulous year of fundraising, granting, and connecting with our community!

At our fiscal year end, September 30, 2016, we had raised \$137,747. From October 2016 to January 2017, we raised an additional \$102,000. This saw us surpass our 2016 goal of raising \$200,000! Our Directors all worked so hard to make this a reality.

As we enter into 2017 our endowment funds are now beyond \$1 million. This is a solid base from which to grow. By contributing to a community endowment fund, our donors are

supporting local projects and programs in perpetuity.

In November, the MRCF granted \$34,000 to local non-profit organizations. The total amount of requested funds was at a new high in 2016, which renewed our commitment to continue raising funds to support non-profit and charitable organizations in Maple Ridge.

As our ability to surpass our first goal has shown, we have a determined, focused team with a bright future in mind for Maple Ridge. We are building a better community, together.

Sincerely
Kathi Halpin

2540 Legacy Campaign Donors

Alastair Brown
Andy and Karin Clevin
Anita and Harry Perler
Bob Jones
Brandee McWhinney
Brian Elliott
Bruce and Judy Johnston
Chris and Mieke Duyvestyn
Dave and Donna Telep
Doug and Shireen King
Dr. Biju and Grace Mathew
Dr. Murray Hurlburt Optometric Corporation
EPR Maple Ridge Langley
Ernie and Judy Daykin
Findlay Gunnell Sandor (Bart Findlay)
Founders Cup
George Mussallem Youth Fund

Great Canadian Casino,
Chances Casino
Harry and Anita Perler
Her Worship Nicole Read and
Steven Read
Irena Shantz
Jan Hickman
Jim Coulter
Joe Tarnowski
Kathy Marshall
Ken and Barb Clark
Kevin and Nellie Evancic
Kristi and Scott Ferguson
Maple Ridge Chrysler
Mark's (Bekar Family)
Marv Jones Honda
Mike and Nancy Murray
Monica and Adrian Hampu

Norm and Betty Pelton
Patricia and Casey Van Vloten
Peter and Susan Hayes
Phil Bourque
PSVC CPA (Walter Volpatti, Haydn Colley)
Ralph and Bonnie Telep
Rick and Jennifer Howard
Robert and Maggie Prince
Robert and Michelle Harrison
Roger and Michelle Cummings
Ron and Alma Jones
Ron and Cathy Antalek
Ryan Jones
Tom Meier and Robin Anderson
Treena and Kevin Innes
Warren and Adrienne Dale

Inspiring Philanthropy

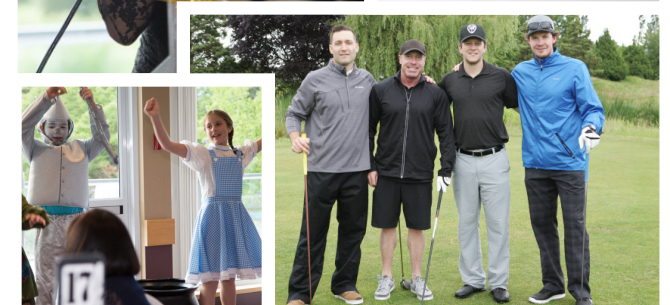


At our 2016 Annual Fundraising Dinner and Citizen of the Year Award Presentation, a local family proposed a challenge to our guests. They pledged to donate up to \$50,000 in matched funds to others donating to the Maple Ridge Community Foundation Legacy Campaign.

Thank you, Ron and Alma Jones, for your generous donation and your inspiring challenge. The challenge was met by many

other kind local residents and business folks. To date, our Legacy Campaign has raised over \$280,000! Our endowment has grown beyond \$1 million, which translates to more granting funds available in the future. We are beyond grateful and thrilled to recognize these great leaders in community philanthropy.

To every donor who contributed, and to those continuing to give to the Legacy Campaign, we thank you.



2016 Grants

The total amount of grants awarded in 2016 was \$34,000! Congratulations to these organizations, and thank you for your work in our community.

Alisa's Wish (directed from George Mussallem Youth Fund) - \$3500, *program resources

Asante Centre - \$1000, *speech and language therapy resources

Big Brothers Big Sisters of the Fraser Valley - \$1000, *Mind Up program

CEED Centre Society - \$1000, *Seniors Stay Active program

Connex Alternate School - \$2000, *school nutrition program for 80+ at risk students

Eric Langton Elementary School - \$3500, *breakfast and lunch meal program for elementary students

Friends in Need Food Bank - \$2000, *school breakfast and snack program

Glenwood Elementary - \$1500, *school nutrition program for elementary students

Maple Ridge/Pitt Meadows Community Services - \$2000, *seniors activity bus outing program

North Fraser Therapeutic Riding Association - \$2500, *one year of care for therapeutic equine

Ridge Meadows Child Development Centre - \$2000, *specialized adapted equipment and supplies

Ridge Meadows Youth Wellness Centre - \$2500, *psychiatry and clinical counselling services

Rotary Club of Haney Lunch Bag Program - \$5000, *healthy bagged lunch program for elementary students

Three Rivers Area Scouts - \$1500, *Scouts membership

Youth Unlimited MRPM - \$3000, *breakfast for 600 students weekly in 5 high schools

Feeding Hungry Children



When the Maple Ridge Community Foundation Grants Committee reviewed the 2016 applications, we were overwhelmed with the funds requested, and disheartened that we were unable to grant to so many worthwhile causes. One cause that was especially difficult to be unable to fund were the various food programs feeding vulnerable children and youth in Maple Ridge.

By luck, chance, or fate many have it, Ian Speckman of Maple Ridge Chrysler Dodge Jeep had a desire to help feed local children and youth. He connected with our Foundation and donated \$10,000 to top up our 2016 grant program. 100% of these funds were directed to the school meal programs

we granted, allowing hundreds more children to be serviced by outstanding organizations working to ensure students are receiving nutritious breakfasts, lunches and snacks throughout the week. Kindergarteners through teens preparing for graduation are being supported by these programs. Kids in your neighbourhood require this support - perhaps even those you wouldn't have guessed need the help.

Of \$34,000 total granted in 2016, \$17,000 of that went to programs feeding hungry children in our community. The need continues to increase year after year, and we need your ongoing support to help fulfill these requests.

How to Give

Why support the Maple Ridge Community Foundation?



Big or small, every donation will make a difference.

Gifts to the Maple Ridge Community Foundation are tax deductible and offer you a great deal of flexibility in how you make your donation.

For instance, you can:

- Make an outright gift of cash, securities or real property
- Set up an automatic payment schedule
- Donate property for a desired purpose
- Provide for a bequest in your will
- Take out a gift of life insurance

For more information, or to easily give online, please visit www.mrcf.ca/giving.

Maple Ridge Community Foundation
PO Box 370
Maple Ridge, B.C. V2X 8K9

Telephone: 604.466.3312
Email: execassist@mrcf.ca
Twitter/Instagram: @wearemapleridge
Facebook: facebook.com/MapleRidgeCommunityFoundation

#WeAreMapleRidge

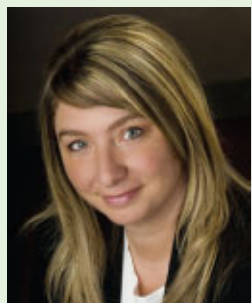
Maple Ridge Community Foundation Board of Directors



Monica Hampu
President



Phil Bourque
Vice President



Brandee McWhinney
Secretary



Kathi Haplin
Treasurer



Andy Clevin
Director



Roger Cummings
Director



Ernie Daykin
Director



Bart Findlay
Director



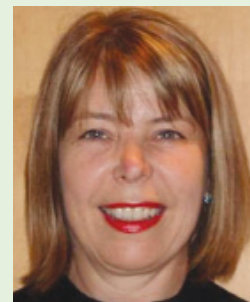
Jan Hickman
Director



Rick Howard
Director



Bonnie Telep
Director



Patricia Van Vloten
Director

President's Message

2016 was a banner year for the Maple Ridge Community Foundation!

We heartily welcomed Bonnie Telep to our Board of Directors. The MRCF participated in several community events, meeting more of our supporters in person and educating new contacts about how we are working to build a better community.

At our Annual Fundraising Dinner & 40th Anniversary Celebration we presented our 25th Annual Citizen of the Year Award. The MRCF Legacy Campaign was announced at this event, along with our goal of raising \$200,000 in 2016. With gratitude, we are thrilled to say this goal was met and surpassed! Special thanks to the 2540 Legacy Campaign Committee, and our Board of Directors for their hard work and dedication.

The 5th Annual Community FORE Charity Golf Tournament was a huge success, and we are planning for this year's tournament at Meadow Gardens.

The need for non-profit program funding remains in Maple Ridge. The Community Chest is a growing program that continues to help our local neighbours in need. In the fall we received the highest number of grant applications to date. The MRCF awarded \$34,000 to 15 charitable organizations, including a \$10,000 contribution from Maple Ridge Chrysler Dodge Jeep.

We have entered 2017 with a renewed excitement for serving this wonderful community. As the need for grant requests increases each year, we continue to work hard to grow our endowment so there are more funds available for our grants. Please consider supporting the Maple Ridge Community Foundation in 2017, so we can continue to give back to your community.

Thank you,
Monica Hampu

Congratulations to our 2016 Citizen of the Year Award recipient Ron Antalek



Ron Antalek has been recognized for his ongoing support of the Maple Ridge Pitt Meadows Community Services, Cythera Transition House Society and Ridge Meadows Hospice.

NOMINATIONS ARE NOW BEING ACCEPTED for the 2017 CITIZEN OF THE YEAR.

Please contact 604.466.3312 or visit mrcf.ca for a nomination form. Deadline is April 14, 2017.

Enriching Lives With Equines

North Fraser Therapeutic Riding Association (NFTRA) is a local non-profit organization enriching the lives of children and adults who experience physical, mental, emotional or social challenges by providing safe and professional therapeutic equine programming.

All of NFTRA's programs and expenses are funded by donations from sponsors, community groups and individuals. Over the past 5 years, the Maple Ridge Community Foundation has contributed \$7,500 in grants to care for the therapeutic equine making a difference in so many of our resident's lives.

To learn more, visit www.nftrarides.wordpress.com.



Save the dates 2017

www.mrcf.ca

- Open to the public
- No golf skill required
- Prizes
- Fun contests

6th Annual COMMUNITY FORE Charity GOLF TOURNAMENT

Monday, June 26 at Meadow Gardens

MAD MAPLE ABOUT RIDGE

Annual Fundraising Dinner & Citizen of the Year Presentation

Saturday, May 13 at Meadow Gardens

Maple Ridge Community Foundation

Details to come. Please contact 604.466.3312 or execassist@mrcf.ca for info.